

Landforms



WORLD-TREKKER'S

Your way to get along arround the Globe. 1 ESO.

Prf. Jn Grimal.



Landforms

Land

Mountain

Plateau

Mesa

Buttes

Valley

Canyon

Gorge

Grassland
or Plain

Desert

Polar

Tundra

Coniferou
s Forest

Temperat
e Forest

Rain
Forest

Wetlands

Island

Peninsula

Cape

Isthmus

Hill

Volcano

Water

Ocean

Sea

Strait

Channel

Lake

River

Delta

Bay

Gulf



Mountain



Mountain

- an area that is much higher than the surrounding land



steep
sides



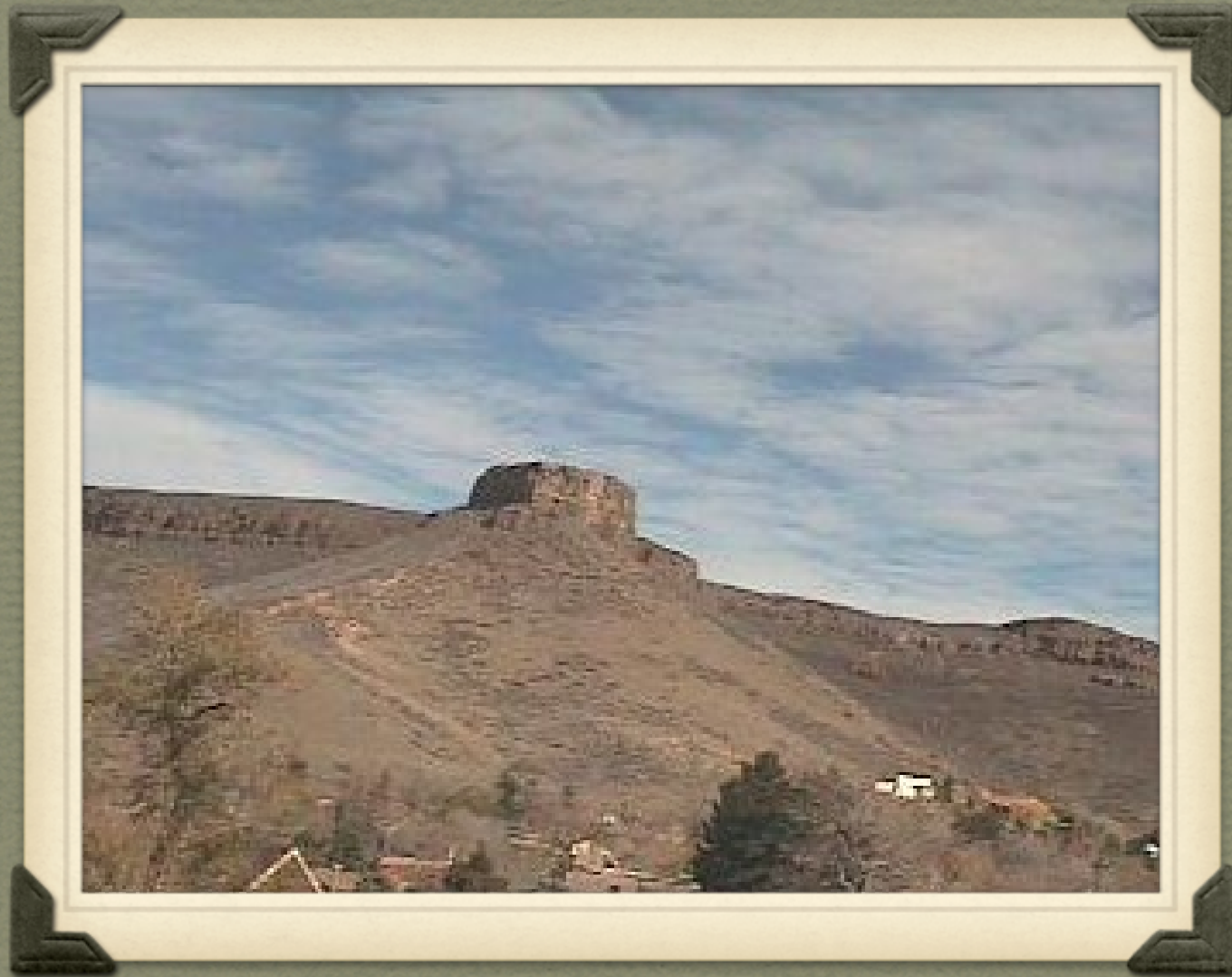
Plateau



Plateau

- has a flat surface on top
- high like a mountain





Mesa



Mesa

- has a flat surface on top
- high like a mountain
- smaller than a plateau



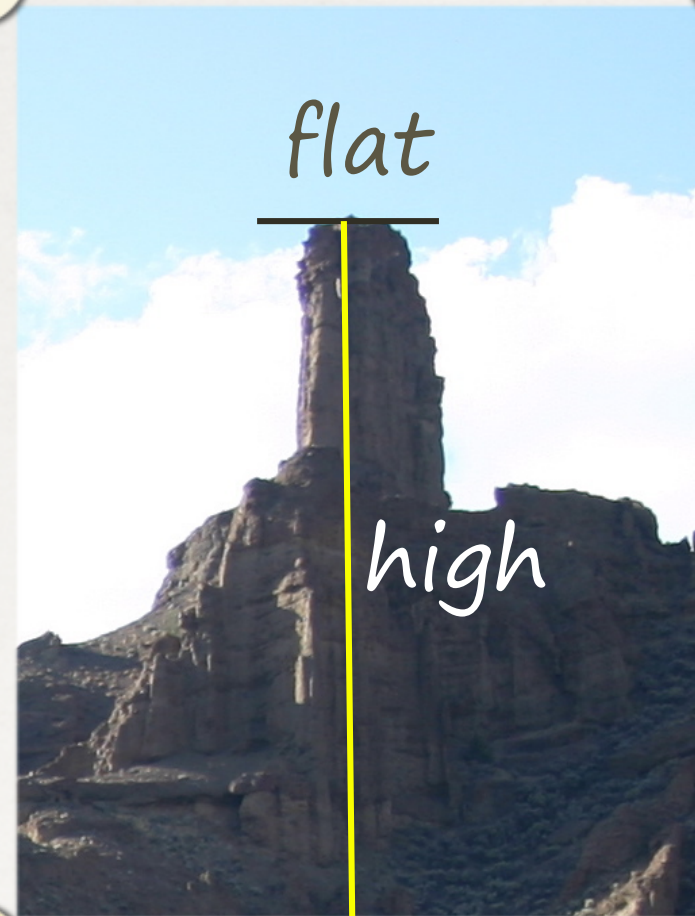


Buttes



Buttes

- has a flat surface on top
- high like a mountain
- smaller than a mesa



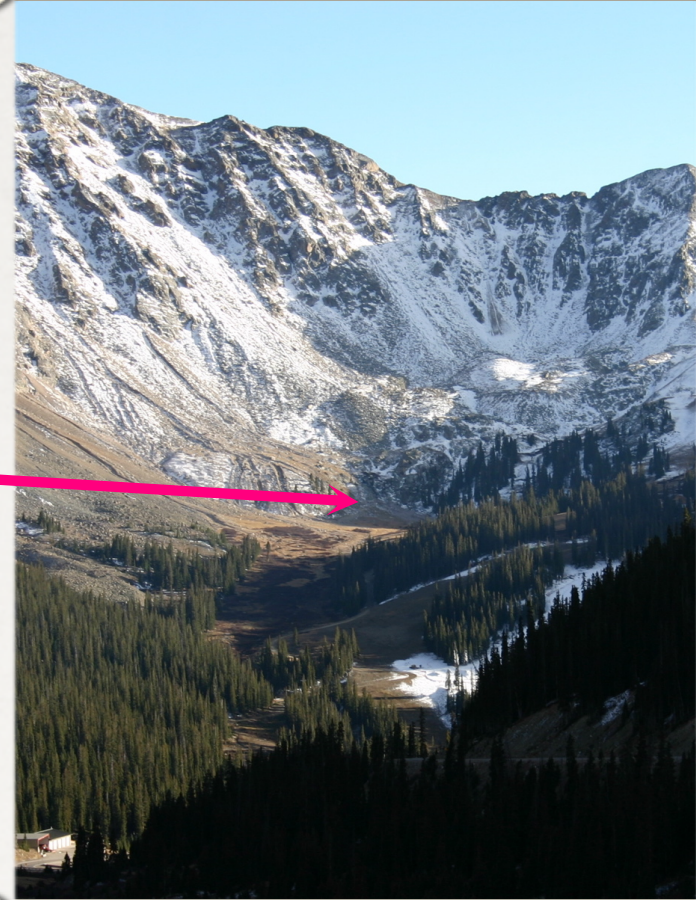


Valley



Valley

- low land between two (2) mountains





Canyon



Canyon

- made by a river
- in a dry place (desert)
- steep sides similar to a valley





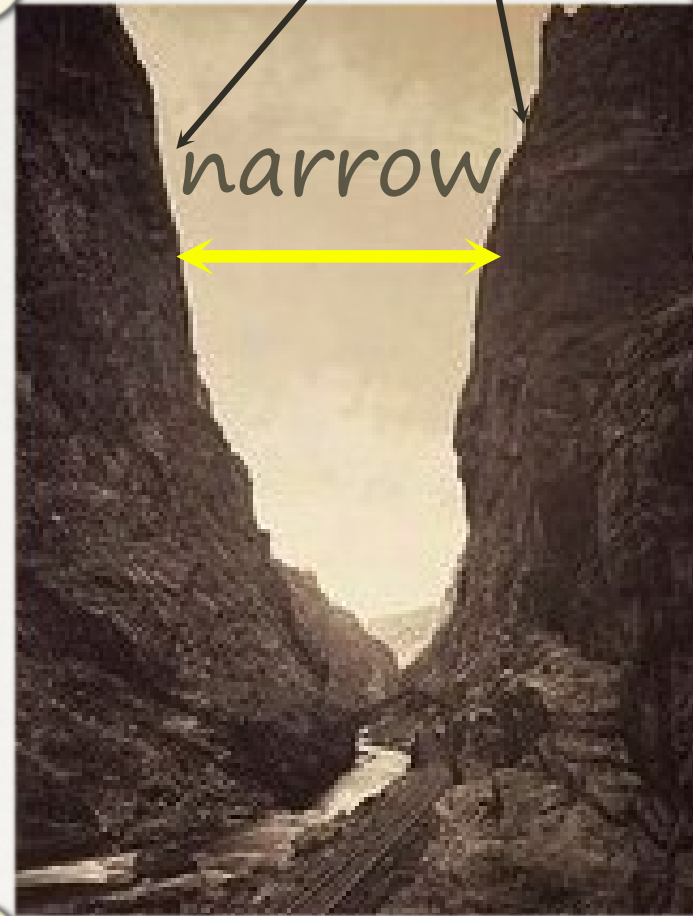
Gorge



Gorge

steep
sides

narrow



- narrow
- steep sides
- like a small canyon



Grassland or Plain

Grassland or Plain



- wide open place
- covered with grass
- flat





Desert



Desert

- *dry place - little to no precipitation*
- *plants do not grow*
- *hot or cold*





Polar



Polar

- *coldest place on earth*
- *covered with snow*
- *found only two (2) places*



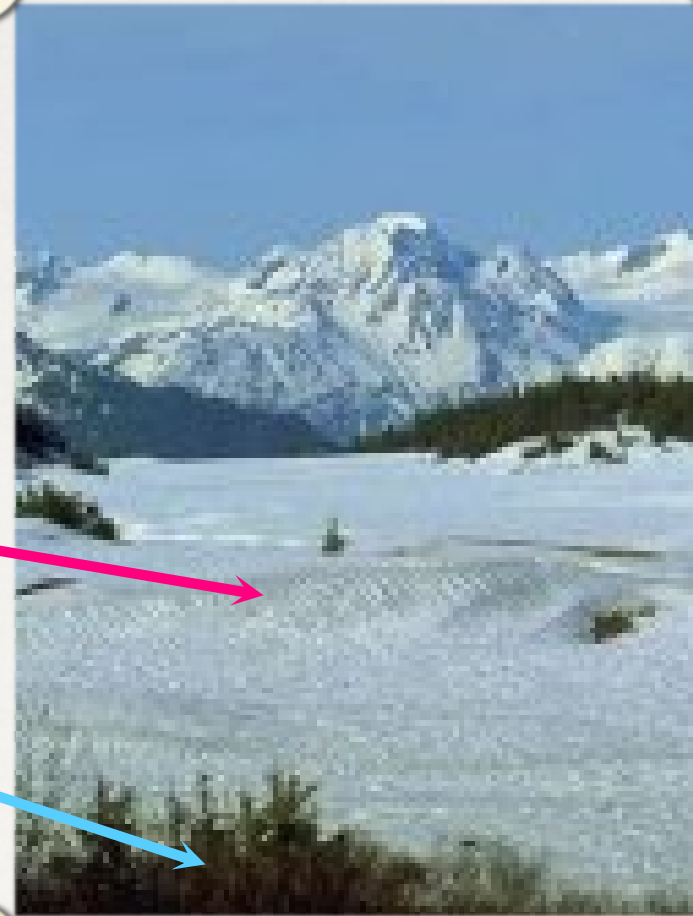


Tundra



Tundra

- cold
- no trees
- has snow
- small plants
- found in the Northern part of the world





Coniferous Forest

Coniferous Forest



- *evergreen*





Temperate Forest



Temperate Forest

- Temperate - Four (4) seasons
- Seasons: Winter, Spring, Summer, Fall



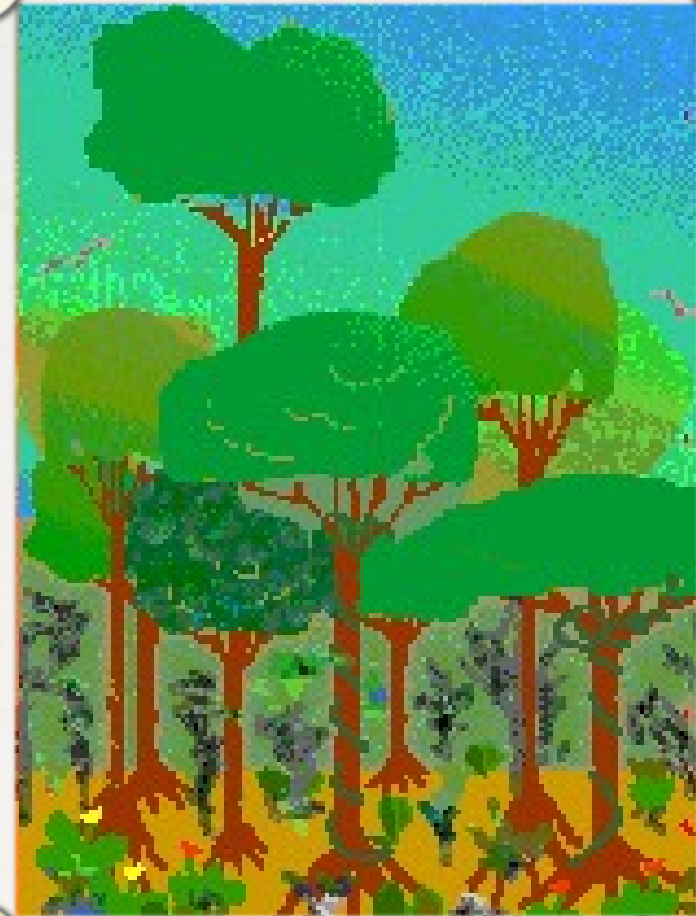


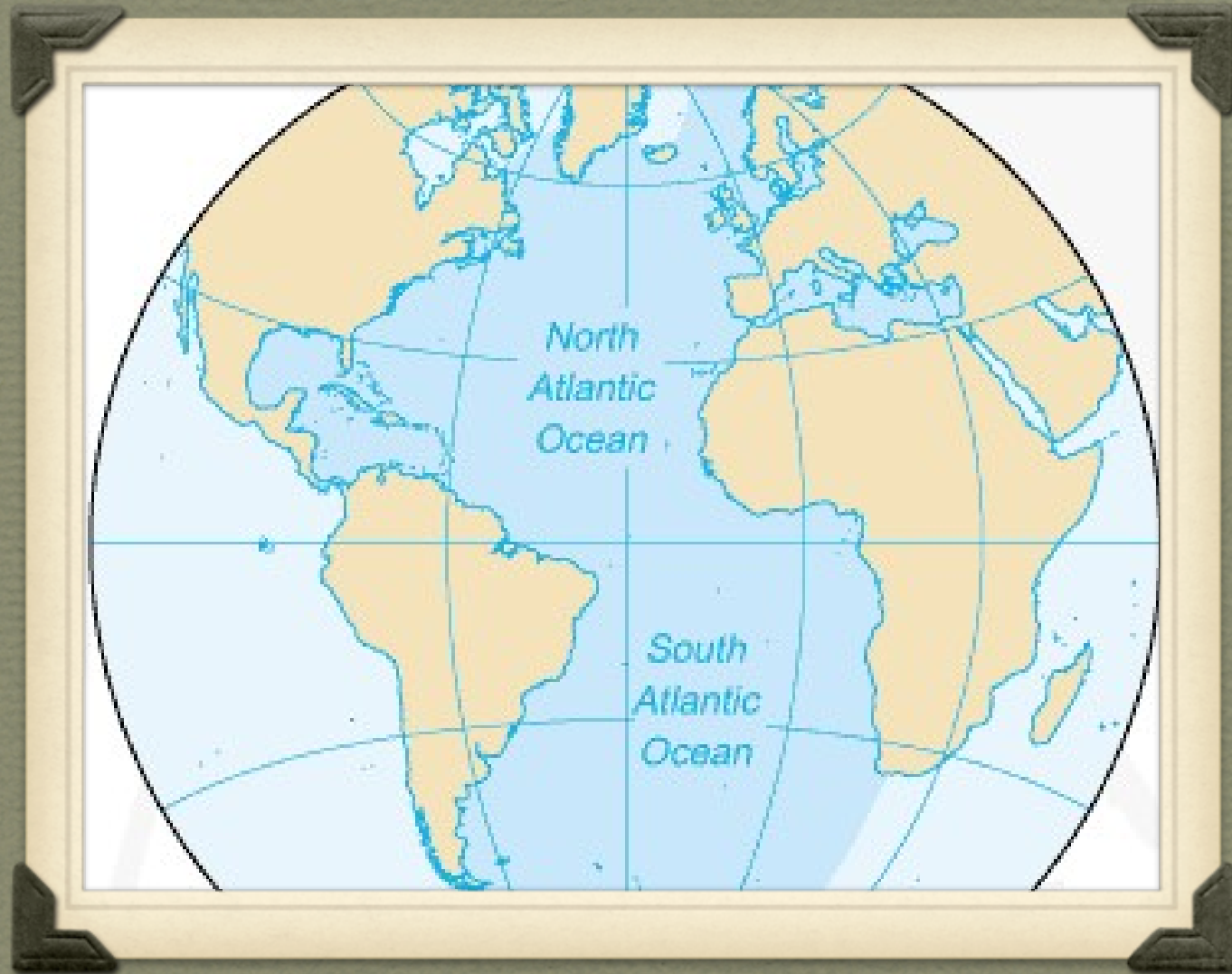
Rainforest



Rainforest

- Rain - lots of rain
- very hot
- Great degree of humidity.





Ocean



Ocean

- A big body of water



Atlantic Ocean



Sea



Sea

- A smaller body of water





Strait



Strait

- narrow waterway
- land on both sides





Channel



Channel

- *waterway*
- *land on both sides*
- *wider than a strait*





Lake



Lake

- *large body of water*
- *surrounded by land*





River



River

- water that flows between land
- starts in the mountains
- ends in the ocean





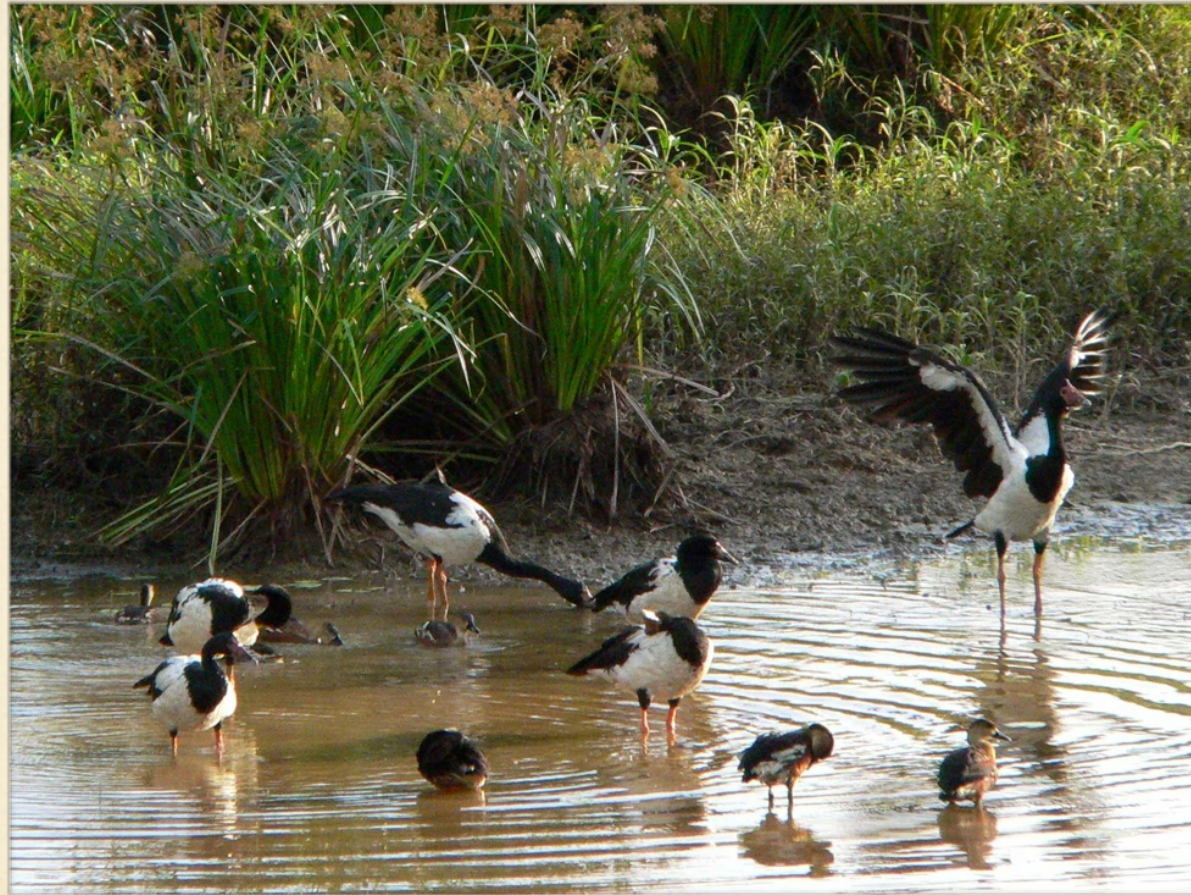
Delta



Delta

- where a river and an ocean meet
- the river drops dirt and land builds up





Wetlands



Wetlands

- land with shallow (not deep) water
- lots of plants





Island



Island

- land
- completely surrounded by water





Peninsula



Peninsula

- land
- water on three (3) sides





Cape



Cape

- land that sticks out into the ocean





Isthmus



Isthmus

- a narrow piece of land
- two (2) large bodies of water on both sides





Bay



Bay

- ocean water that pushes into the land
- makes a circular shape



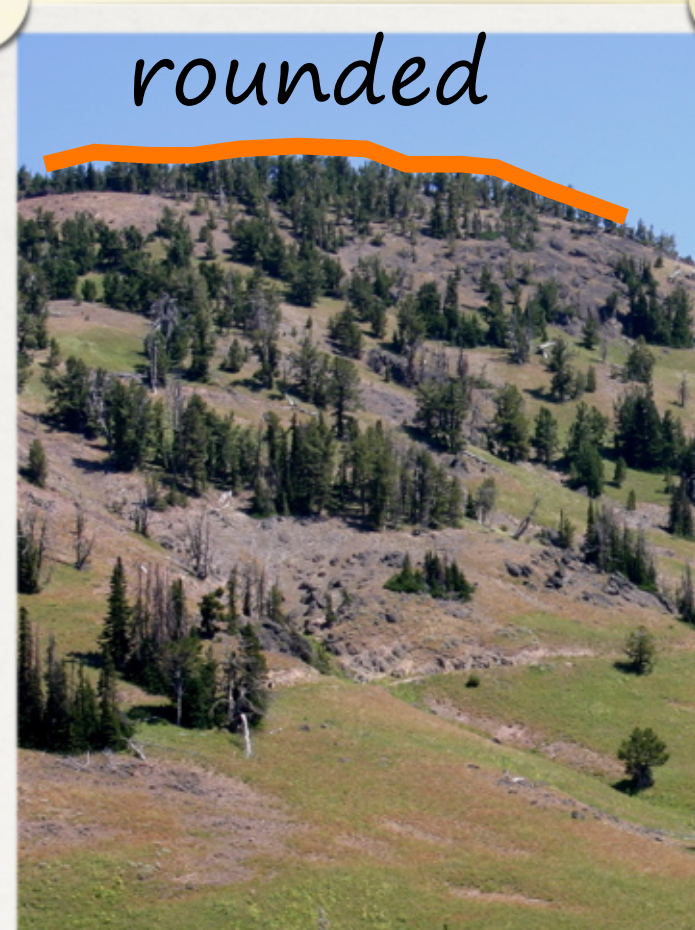


Hill



Hill

- shorter than a mountain
- rounded top





Volcano



Volcano

- when magma forces its way out of the earth





Gulf



Gulf

- *like a bay*
- *deep water*

